



interested in this floorplan?
give us a call!

 **307.800.7223**



unique features:

- Flexible living area layout: open concept or traditional
- Expansive kitchen with granite countertops and full-height pantry
- Thoughtful work triangle and ample countertop space for easy meal prep
- Bedrooms in private hallway

3



2



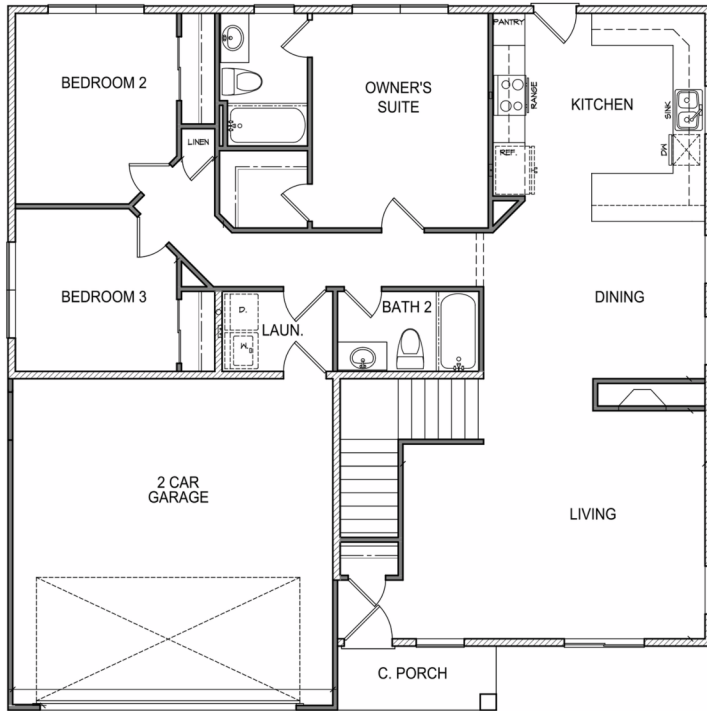
2



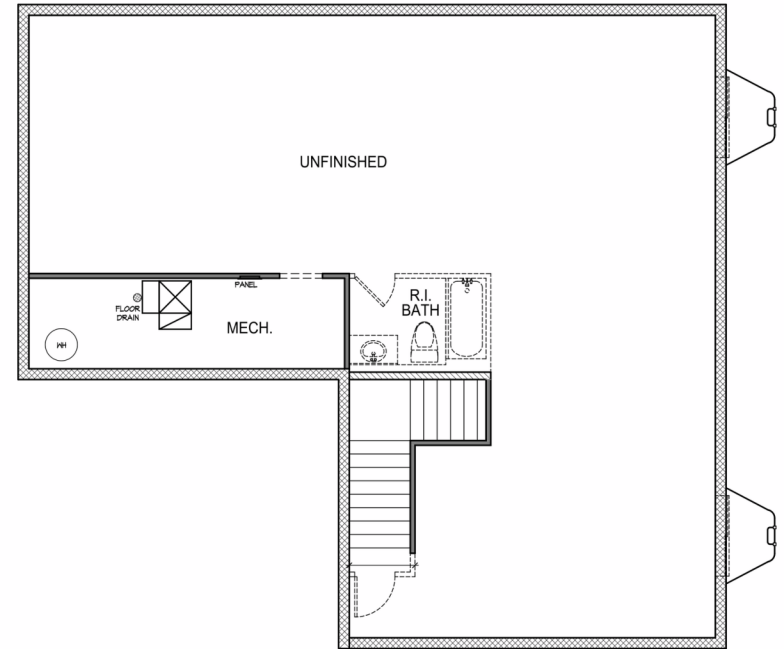
1,280 SQFT - 2,560 SQFT

the marion

main floor



optional basement



interactive floorplan
coming soon

